

**TABLE OF CONTENTS**

---

**1. SAFETY**

---

**2. PREPARATION**

---

**3. FRAME**

---

**4. TRANSMISSION**

---

**5. DRIVE**

---

**6. ROW UNIT**

---

**7. OPTIONAL EQUIPMENT**

---

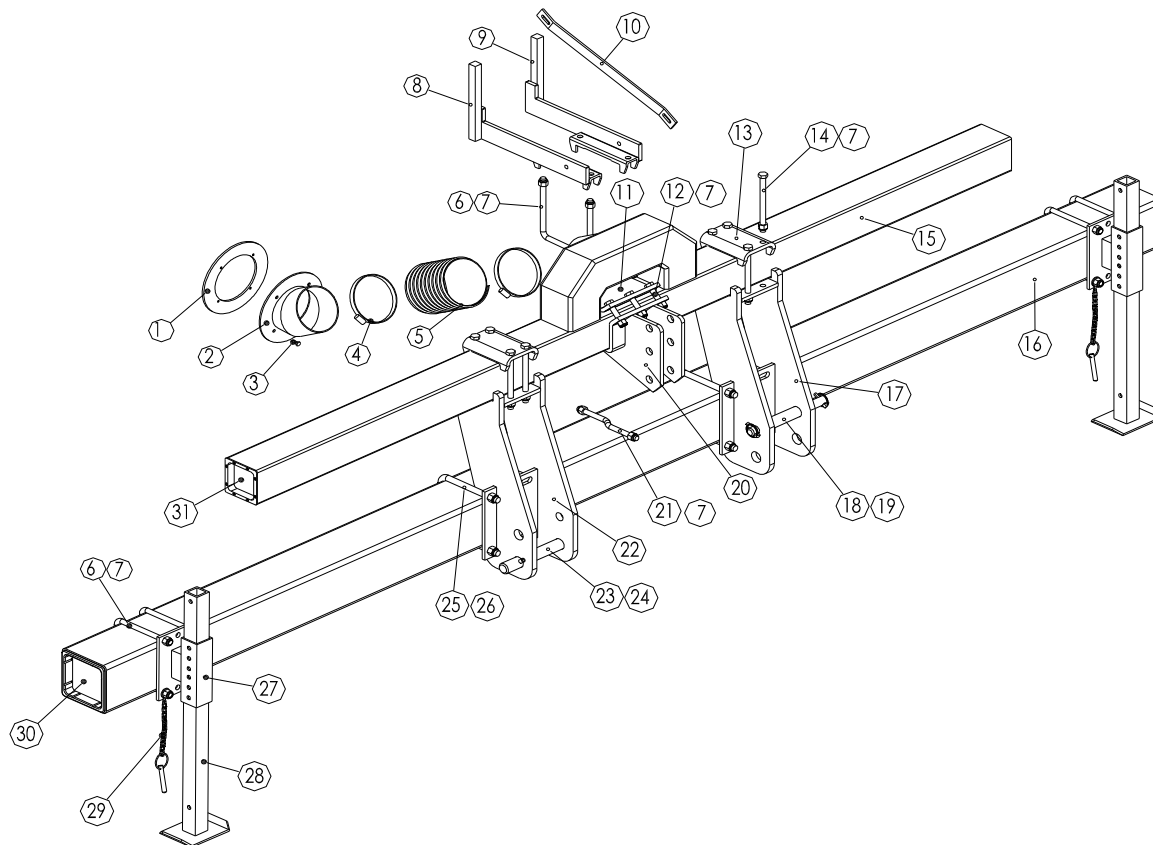
**FRAME**

**7" x 7" Twin-Row Frame, Rigid**

**For 4 x 2 row Frames**

The Twin-row frames are rigid and consist of a lower 7" x 7" square toolbar and an upper 5" x 5" square toolbar. The rigid toolbar is equipped with a 3-point hitch for mounting to the tractor. Refer to section **PREPARATION** for hitching the planter to the tractor.

**IMPORTANT:** Periodically check that the bolts attaching the hitch, stands and turbofan mounting brackets are tight. Vibrations from operation can cause them to loosen or break. Also check that the hose (part No. 900395) is not cracked or deteriorated, to avoid losing air in the vacuum system.



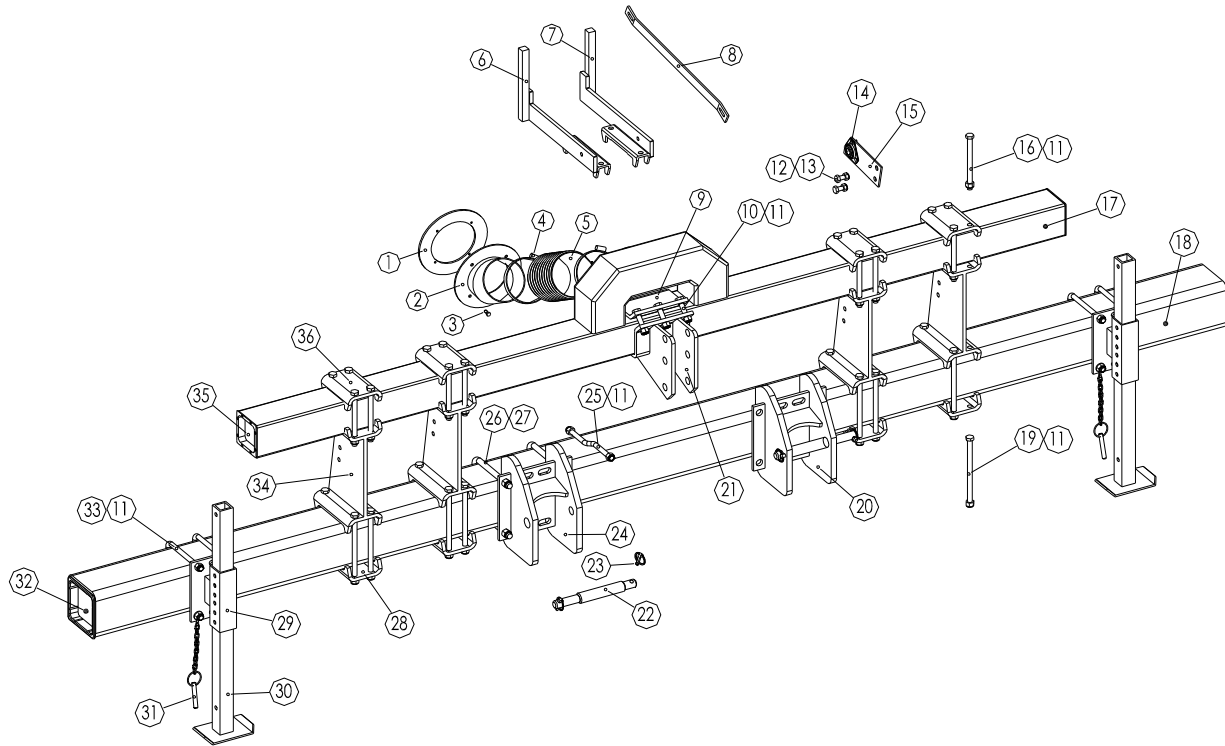
ITEM	PART No.	DESCRIPTION
1	900131	Gasket, for standard fan
2	900379	Turbofan inlet stub
3	F38615	Hex head bolt, 8 x 20
4	JHS128	6" hose clamp
5	900395.1	Hose, 6" Dia x 7" long
6	4502.S	U Bolt, 7x7, 5/8-11
7	F37188	Nylon locknut, 5/8-11
8	900392.1	Turbofan support, RH
9	900393.1	Turbofan support, LH
10	900360	Fan vibration strap
11	4889	Counter clamp, upper hitch
12	F15315	Hex head bolt, 5/8-11 x 3", Gr 8
13	E7571	Top cap, toolbar spacer
14	F15329	Hex head bolt, 5/8-11 x 8", Gr 8
15	900359	5" X 5" Top bar
16	4500.2	7" x 7" Main toolbar

ITEM	PART No.	DESCRIPTION
17	800188.L	Hitch/ Spacer combination, LH
18	4898	Hitch pin, CAT II/III
19	11476	Lynch pin, 9mm
20	4890	Hitch, top link
21	900237	Z bolt, 5/8-11 x 10", Gr 5
22	800188.R	Hitch/ Spacer combination, RH
23	O302-592	Hitch pin, CAT III
24	O104-036	Lynch pin 7/16"
25	4502.SA	U Bolt, 7 x 7, 3/4-10
26	F37190	Nylon locknut, 3/4-10
27	E1030	Mounting bracket, jack stand
28	E1031	Jack stand
29	KA4733	Pin and chain, stand adjustment
30	4517.S	End cap, 7 x 7
31	4517	End cap, 5x5

**FRAME**

**7" x 7" Twin-Row Frame, Rigid**

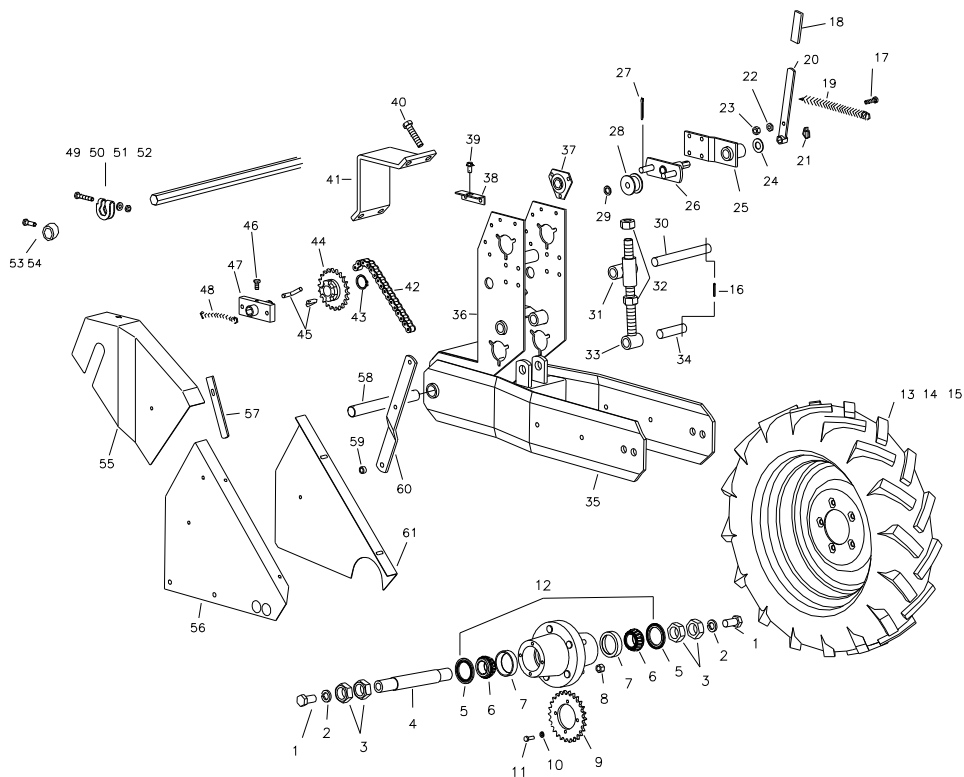
**For frames 6 x 2 and Larger**



ITEM	PART No.	DESCRIPTION	ITEM	PART No.	DESCRIPTION
1	900131	Gasket, for standard fan	19	F15333	Hex head bolt, 5/8-11 x 10", Gr 8
2	900379	Turbofan inlet stub	20	4896	Lower hitch bracket, LH
3	F38615	Hex head bolt, 8 x 20	21	4890	Hitch, top link
4	JHS128	6" hose clamp	22	4898	Hitch pin, CAT II/III
5	900395.1	Hose, 6" Dia. X 7" long	23	11476	Lynch pin, 9mm
6	900392.1	Turbofan support, RH	24	4897	Lower hitch bracket, RH
7	900393.1	Turbofan support, LH	25	900237	Z bolt, 5/8-11 x 10", Gr 5
8	900360	Fan vibration strap	26	4502.SA	U Bolt, 7 x 7, 3/4-10
9	4889	Counter clamp, upper hitch	27	F37190	Nylon locknut, 3/4-10
10	F15315	Hex head bolt, 5/8-11 x 3", Gr 8	28	E7572	Bottom cap, toolbar spacer
11	F37188	Nylon locknut, 5/8-11	29	E1030	Mounting bracket, jack stand
12	F38738	HCS 14-2.0 X 35 Z 8.8	30	E1031	Jack stand
13	F40171	Lock nut 12mm YZ	31	KA4733	Pin and chain, stand adjustment
14	4515	Flange bearing 7/8" hex bore	32	4517.S	End cap, 7 x 7
15	4891	Bearing support	33	4502.S	U Bolt, 7 x 7, 5/8-11
16	F15329	Hex head bolt, 5/8-11 x 8", Gr 8	34	E7570	Toolbar spacer
17	900359.1	Top toolbar, 5 x 5	35	4517	End cap, 5 x 5
18	4500.2	Toolbar, 7 x 7, 3/8" wall	36	E7571	Top cap, toolbar spacer

**FRAME**

**7" x 7" Wheel Block**



ITEM	PART No.	DESCRIPTION
	4520	Hex shaft. Specify length.
1	F13359	Hex head bolt, 3/4-10 x 1-1/2", Gr.5
2	F33632	Lock washer, 3/4"
3	F36274	Jam nut, 1-1/4-12
4	AS7191-E-16	Spindle
5	P602106	Grease seal
6	P752318	Tapered roller bearing (Peer 14136A)
7	P702216	Cup for tapered roller bearing
8	P201602	Lug nut, 1/2-20
9	4782.A	Drive Sprocket, 26 tooth, #50
10	F33620	Lock washer, 5/16"
11	F13055	Hex head bolt, 5/16-18 x 1", Gr.5
12	A525200-5	Hub assembly (Hub and items 5-8)
13	G170227132	Tire only, 7.60 x 15, 6ply
14	AW51522V	Rim only, 5 x 15 w/valve guard
15	900015.2	Tire assembly (items 13 & 14)
16	10172095	Roll pin, 6 x 50
	10172093	Roll pin, 6 x 40
17	10502018	Hex head bolt, 10 x 35
18	4894	Plastic cover for handle
19	9613.S	Spring
20	4787	Handle, chain tightener
21	9557	Lynch pin
22	F40308	Nut, 10mm
23	F10486-01956	Nylon locknut, 10mm

**FRAME**

---

**7" x 7" Wheel Block**

<b>ITEM</b>	<b>PART No.</b>	<b>DESCRIPTION</b>
24	10623028	Washer, 21x40x2
25	4784.A	Idler support bracket
26	4786.B	Idler bracket
27	10170067	Cotter pin, 5 x 40
28	4772	Idler roller
29	10622026	Washer, 16.5x26x2
30	4779	Upper pin, 25mm x 215mm
31	4777	Bushing tee
32	30600025	Nut, 24mm
33	4775.A	Threaded rod, 24mm
34	4778	Lower pin, 25mm x 103mm
35	4773.B	Tapered wheel mounting frame
36	4774.1	Wheel unit bracket
37	4515	Bearing complete with flanges
	4515.1	Bearing only, hex bore (205KRRB2)
	4515.2	Flange
38	5132	Bracket for shield mounting
39	9724.2	Keeper bolt for shield
40	10513014	Hex head bolt, 16 x 70
41	4882	Clamp facing, 7x7
42	4791.A	Drive chain, #50, 130 links w/conn link
43	6915	Snapping, external (30mm)
44	4790.A	Sprocket, slipclutch (22 teeth)
45	4789	L pin, for slipclutch
46	10502014	Hex head bolt, 10 x 20
48	L123237	HITCH WELDMENT (8 ROW 30)
47	4788	Slipclutch block
48	5247	Spring
	10170067	Cotter pin, 5 x 40
49	4523.1	Narrow hex shaft stop, complete
50	F38620	Hex head bolt, 8 x 45
51	10620064	Washer, 8.5x16x2
52	F40307	Nut, 8mm
53	10502012	Hex head bolt, 10 x 15
54	4523	Bushing stop
55	5130.G	Left hand upper chain guard (shown)
	5130.D	Right hand upper chain guard
56	4783.GB	Left hand lower chain guard (shown)
	4783.DB	Right hand lower chain guard
57	5131	Shield guide bar
58	4776.A	Front pin, 30mm x 260mm
59	1538	Spacer bushing, 12x18x10mm wide
60	5129	Shield mounting brace
61	4729.G	Lower left inside chain guard (shown)
	4729.D	Lower right inside chain guard